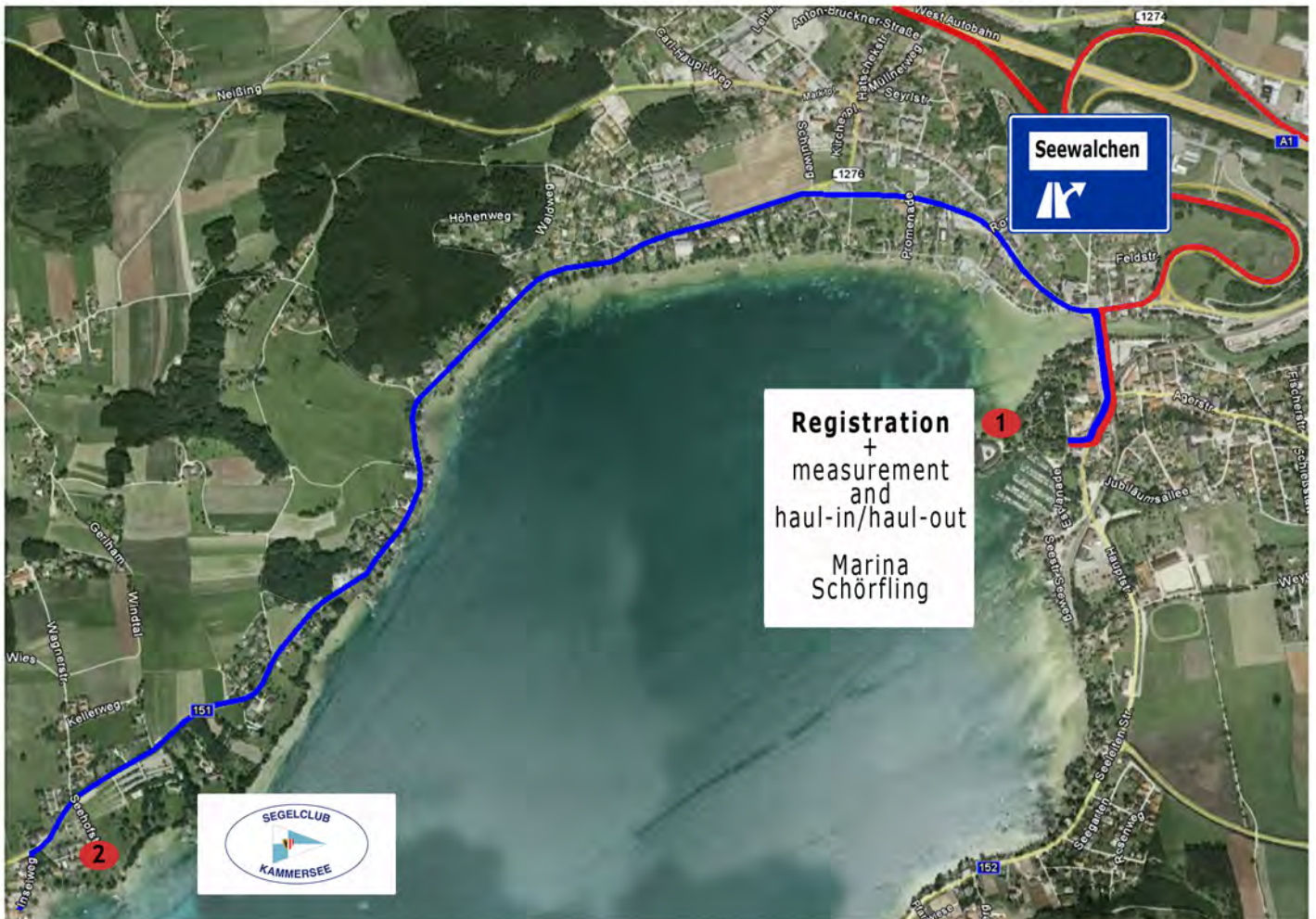


# Directions



Exit A1 „Westautobahn“ - Seewalchen / Attersee

**1** 1<sup>st</sup> access point: Registration, Marina Schörfling (near railway station)

**—** Route highway exit - registration

**2** 2<sup>nd</sup> access point: Segelclub Kammersee, Litzlberg

**—** Route registration - Segelclub Kammersee

# Directions Access points



**1** 1<sup>st</sup> access point:  
Registration at Marina Schörfling  
4861 Schörfling, Bahnhofstraße 19

GPS-coordinates:

Latitude: 47°56'42.66"N  
Longitude: 13°35'37.46"E

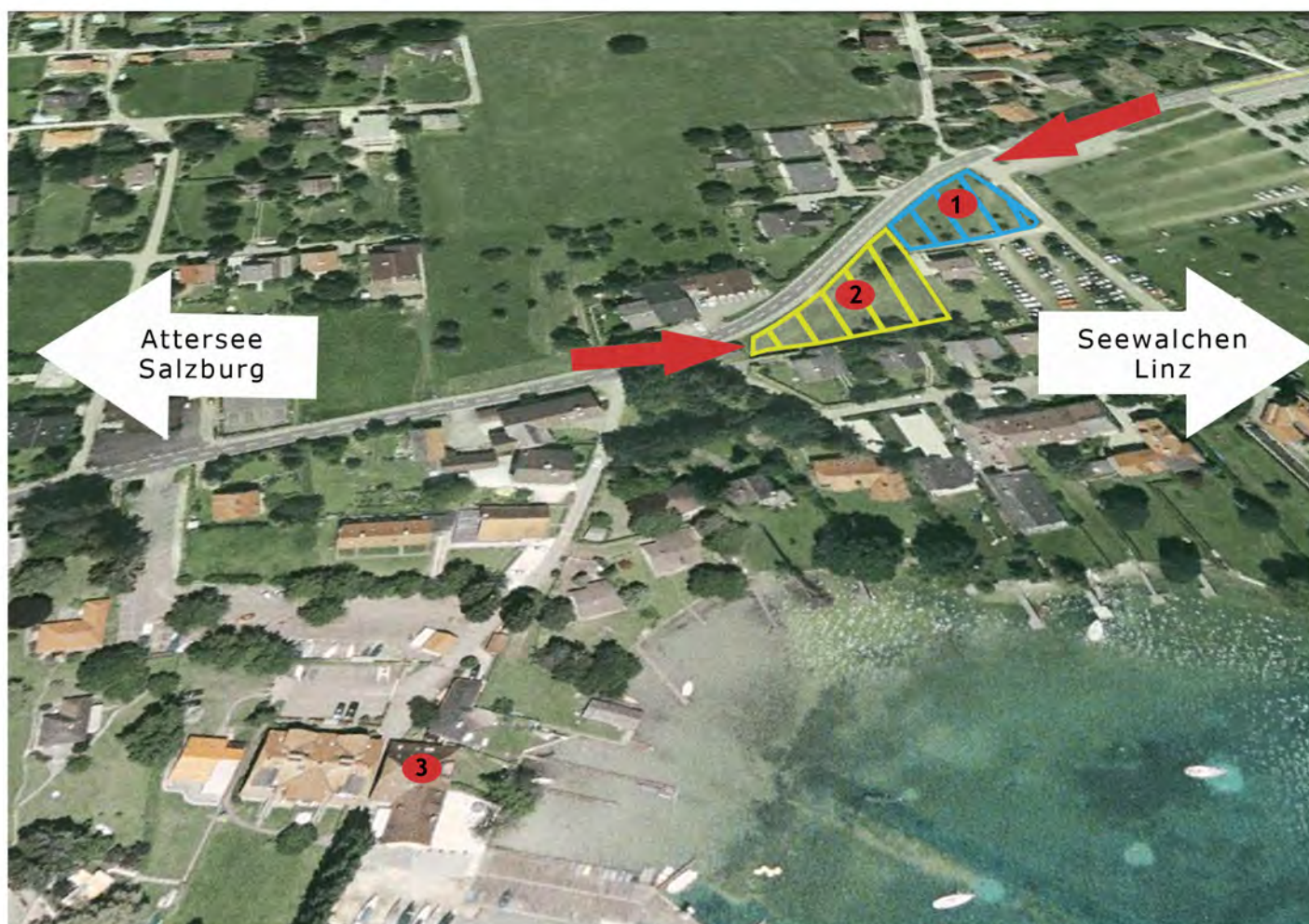
- A1 „Westautobahn“: EXIT „SEEWALCHEN / Attersee“
- After 1,3 km: Turn right to B151 / Attersee Bundesstraße
- After 120 m: Turn left at the traffic lights over the bridge to B152 / Schörfling/Weyregg
- After 500 m: Turn right to MARINA SCHÖRFLING

**2** 2<sup>nd</sup> access point:  
Segelclub Kammersee in Litzlberg  
4863 Seewalchen, Inselweg 13

- Turn left to B152 / Seeleiten-Bundesstraße
- After 500 m: Turn left at the traffic lights to B151 / Attersee Bundesstraße
- Continue on B151 for 4 km
- 100 m after public pool area Litzlberg turn left to the car park of the Ober bank Soling EC 2011



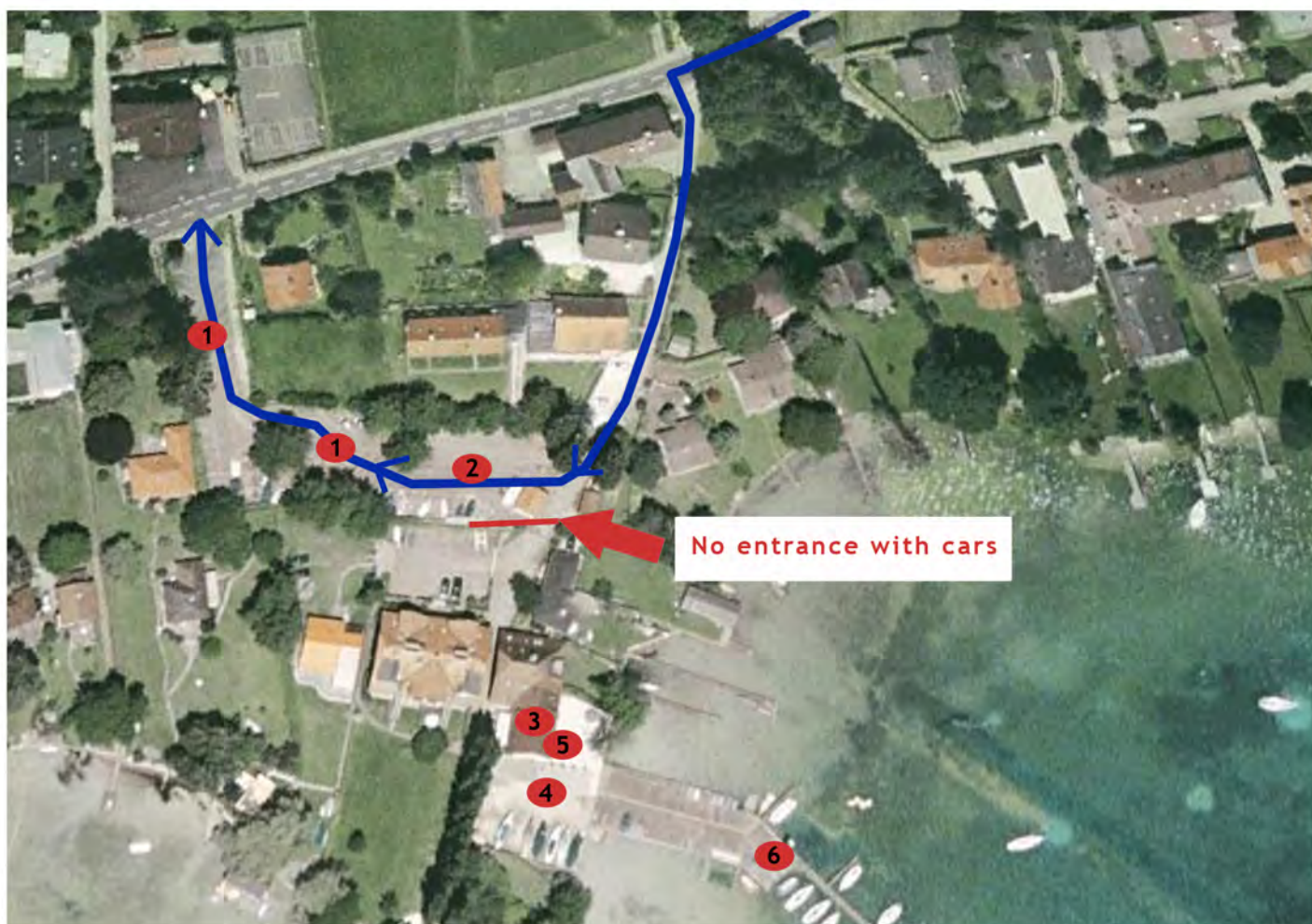
# Parking



- ① Parking - boat trailers
- ② Parking - cars
- ③ Segelclub Kammersee, Litzlberg



# SCK - Site plan



- |          |  |          |            |
|----------|--|----------|------------|
| <b>1</b> | Car parking  | <b>5</b> | Restaurant |
| <b>2</b> | Toilets, changing rooms                                  | <b>6</b> | Moorings   |
| <b>3</b> | Race Office and General Secretary, 1 <sup>st</sup> floor |          |            |
| <b>4</b> | Championship tent  |          |            |